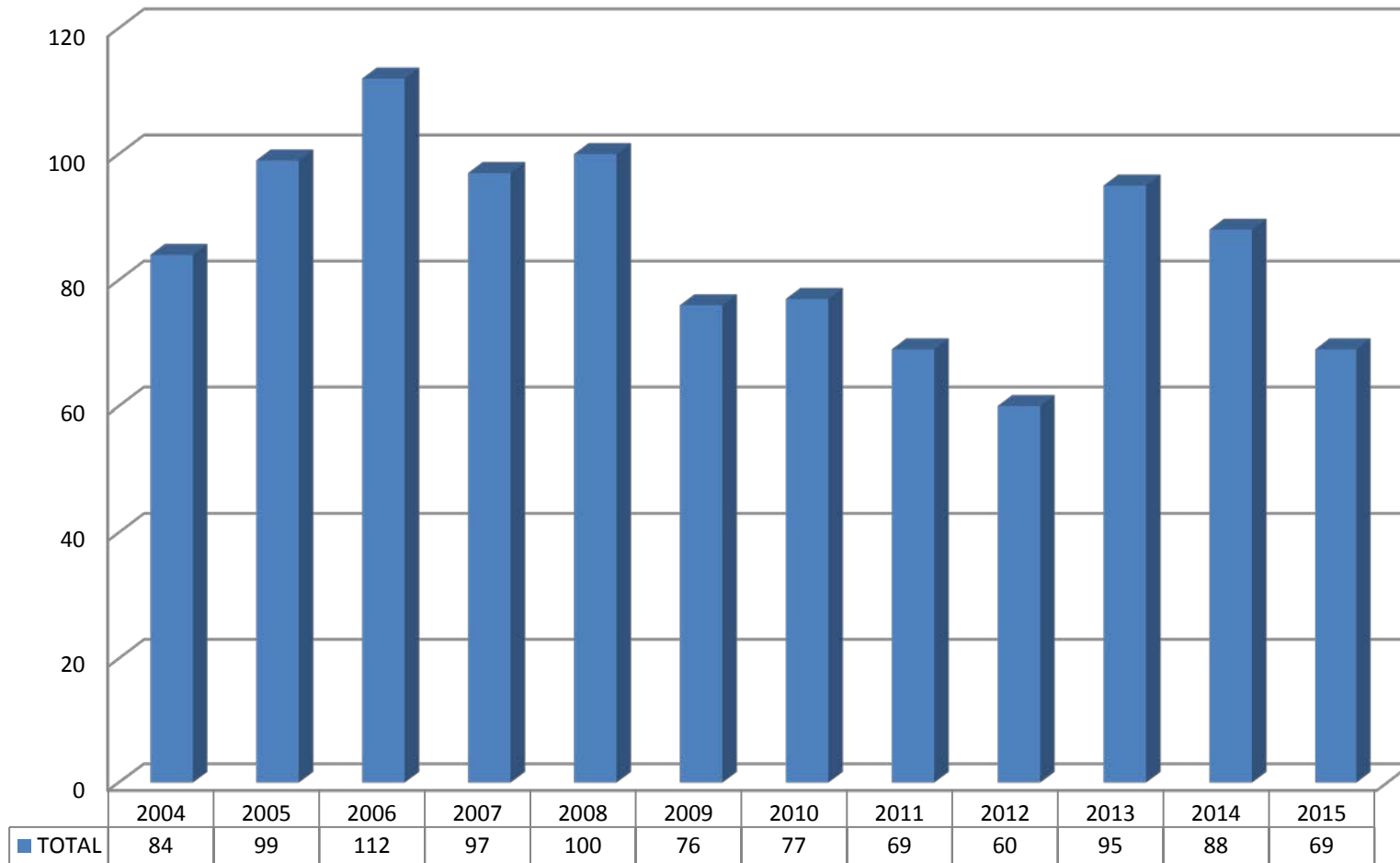
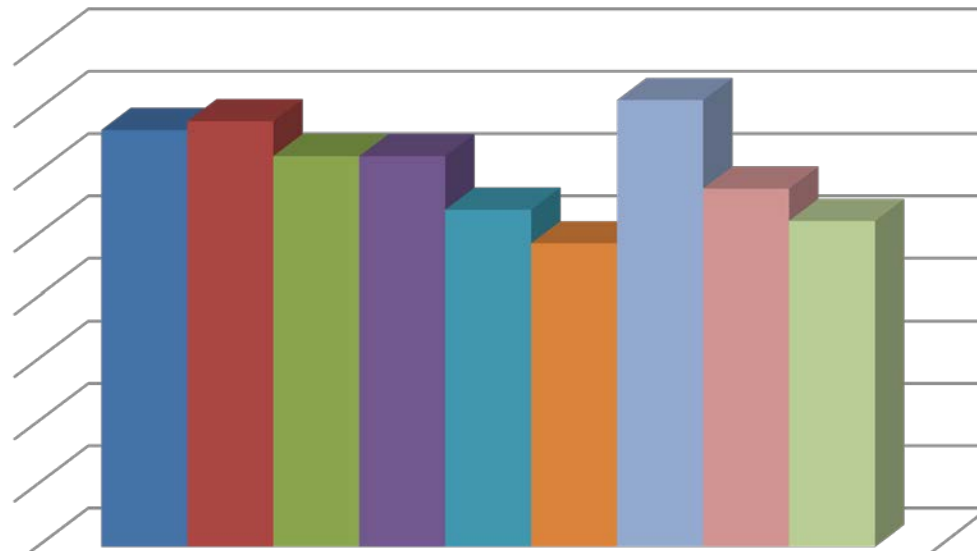


## Total Occupational Fatalities - Arizona 2015



SOURCE: CENSUS OF FATAL OCCUPATIONAL INJURIES, INDUSTRIAL COMMISSION OF ARIZONA

### Fatality Rate per 100,000 2007-2015



| Fatality Rate per 100,000 Employees |      |
|-------------------------------------|------|
| 2007                                | 3.34 |
| 2008                                | 3.41 |
| 2009                                | 3.13 |
| 2010                                | 3.13 |
| 2011                                | 2.70 |
| 2012                                | 2.43 |
| 2013                                | 3.58 |
| 2014                                | 2.87 |
| 2015                                | 2.61 |