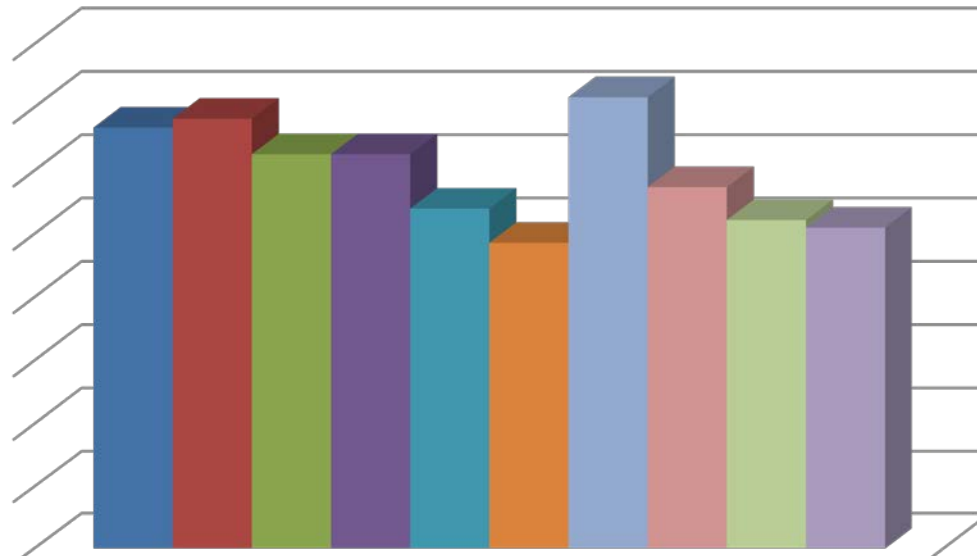
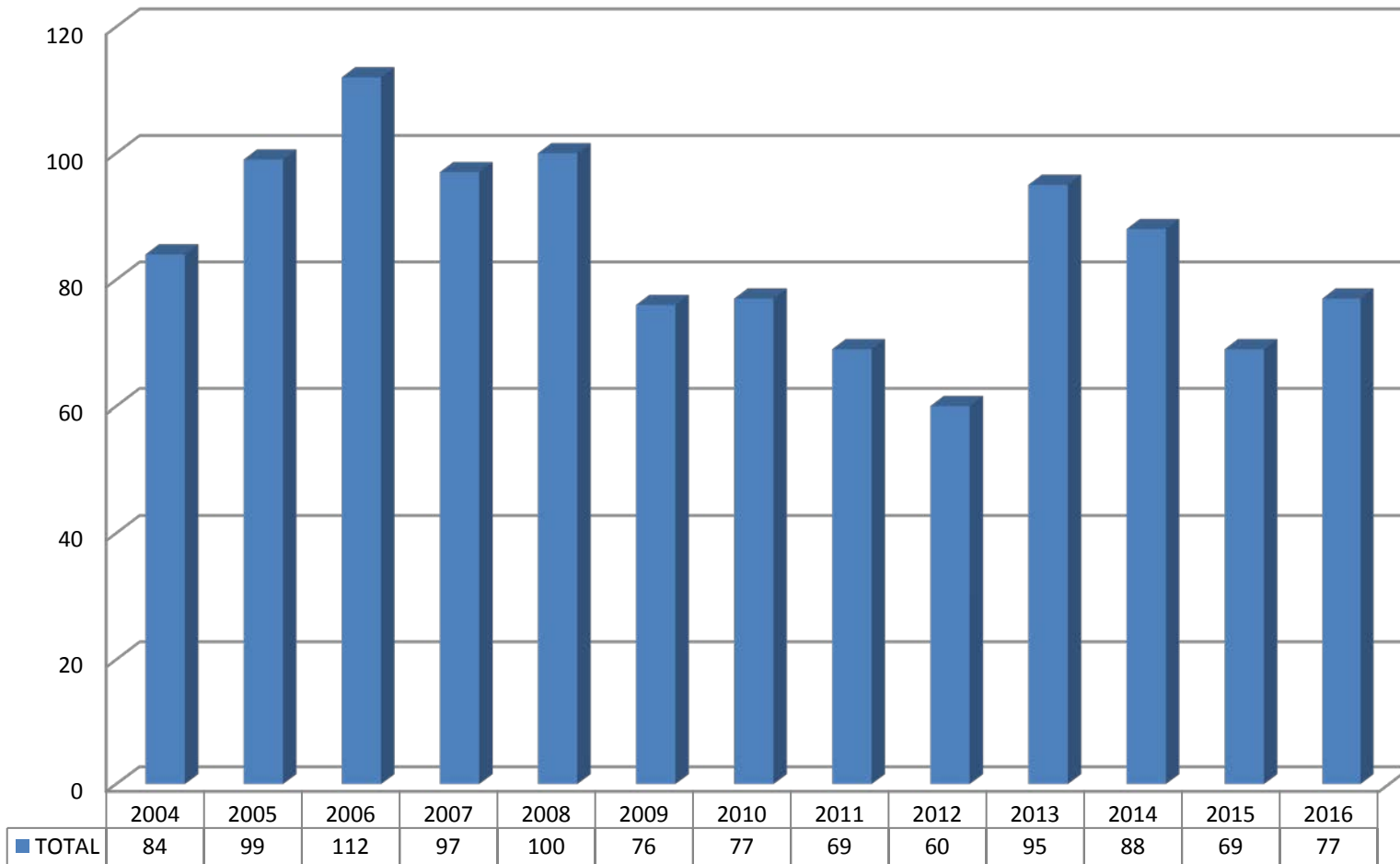


### Fatality Rate per 100,000 2007-2016



Fatality Rate per 100,000 Employees	
■ 2007	3.34
■ 2008	3.41
■ 2009	3.13
■ 2010	3.13
■ 2011	2.70
■ 2012	2.43
■ 2013	3.58
■ 2014	2.87
■ 2015	2.61
■ 2016	2.55

### Total Occupational Fatalities - Arizona 2016



SOURCE: CENSUS OF FATAL OCCUPATIONAL INJURIES, INDUSTRIAL COMMISSION OF ARIZONA