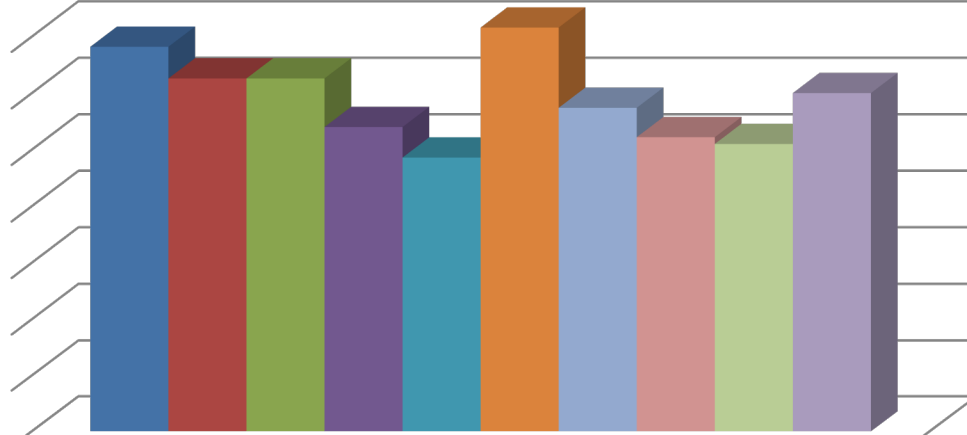


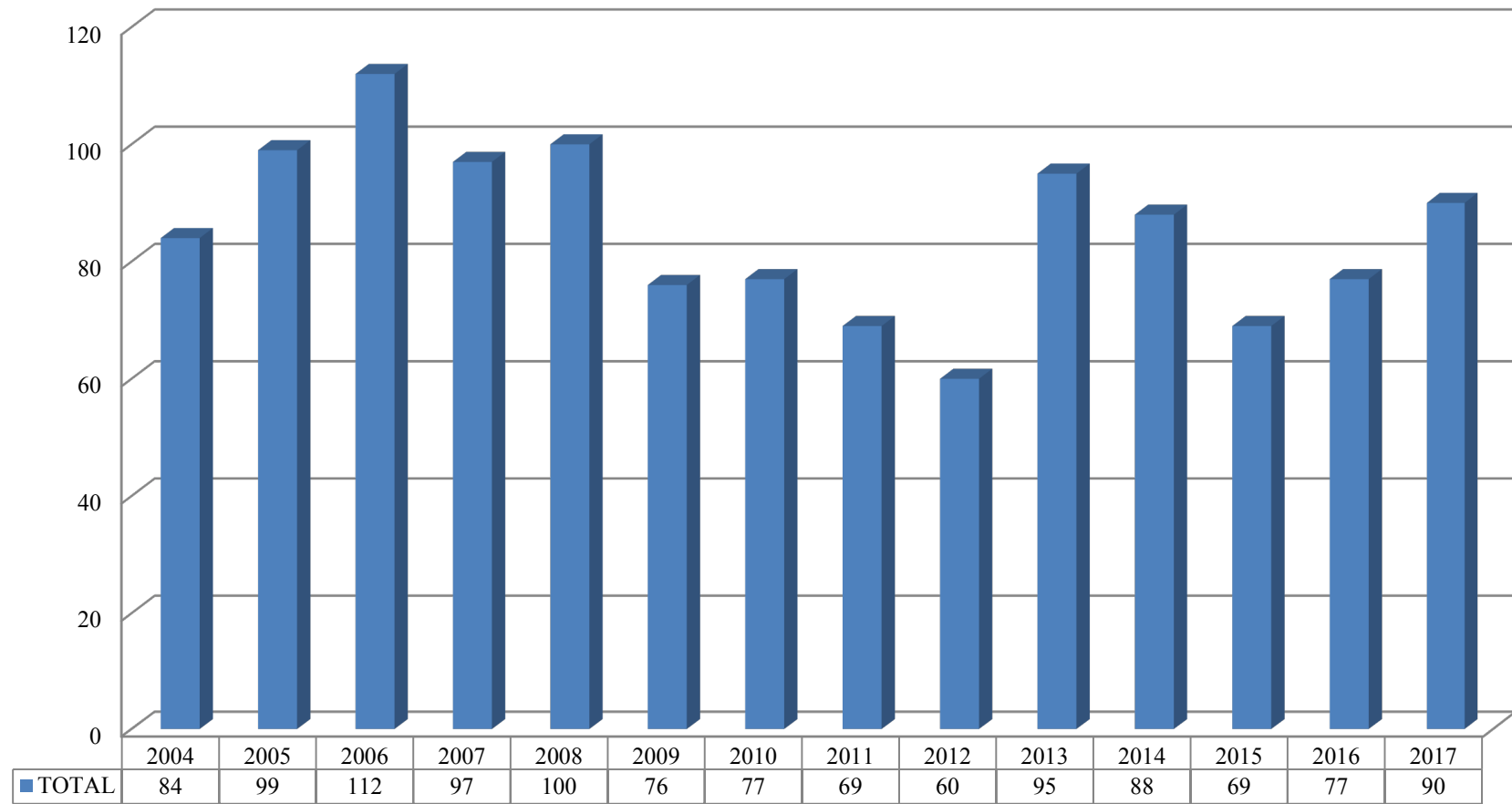
Fatality Rate per 100,000
2008-2017



Fatality Rate per 100,000 Employees

■ 2008	3.41
■ 2009	3.13
■ 2010	3.13
■ 2011	2.70
■ 2012	2.43
■ 2013	3.58
■ 2014	2.87
■ 2015	2.61
■ 2016	2.55
■ 2017	3.00

Total Occupational Fatalities - Arizona 2017



SOURCE: CENSUS OF FATAL OCCUPATIONAL INJURIES, INDUSTRIAL COMMISSION OF ARIZONA