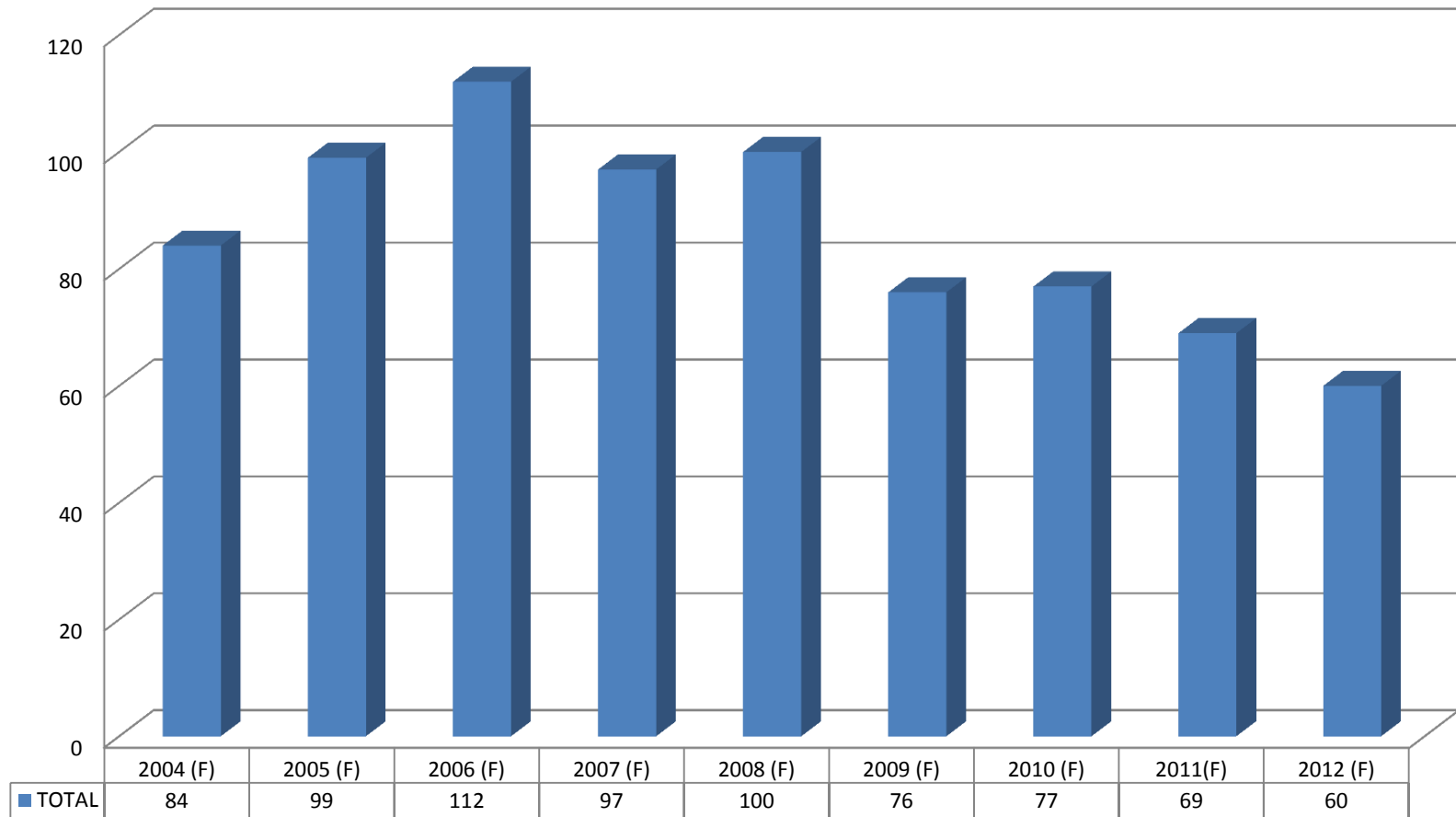


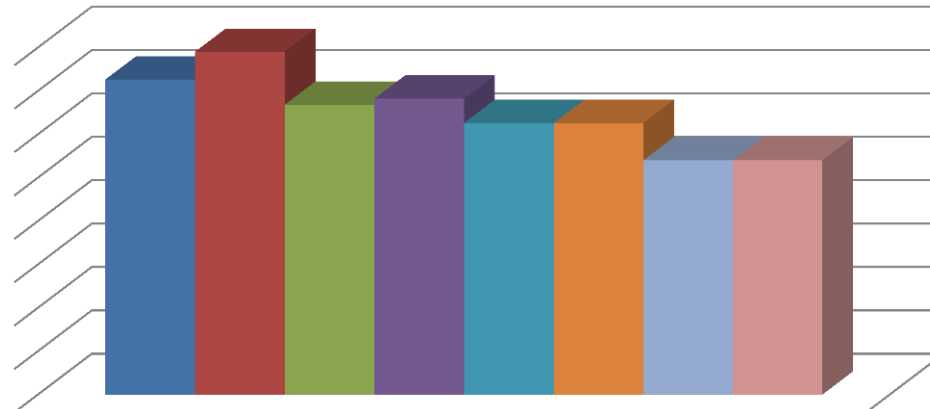
Total Occupational Fatalities - Arizona



(F) - Final

SOURCE: CENSUS OF FATAL OCCUPATIONAL INJURIES, INDUSTRIAL COMMISSION OF ARIZONA

Fatality Rate per 100,000 2005-2012



Fatality Rate per 100,000 Employees	
■ 2005	3.63
■ 2006	3.95
■ 2007	3.34
■ 2008	3.41
■ 2009	3.13
■ 2010	3.13
■ 2011	2.70
■ 2012	2.70