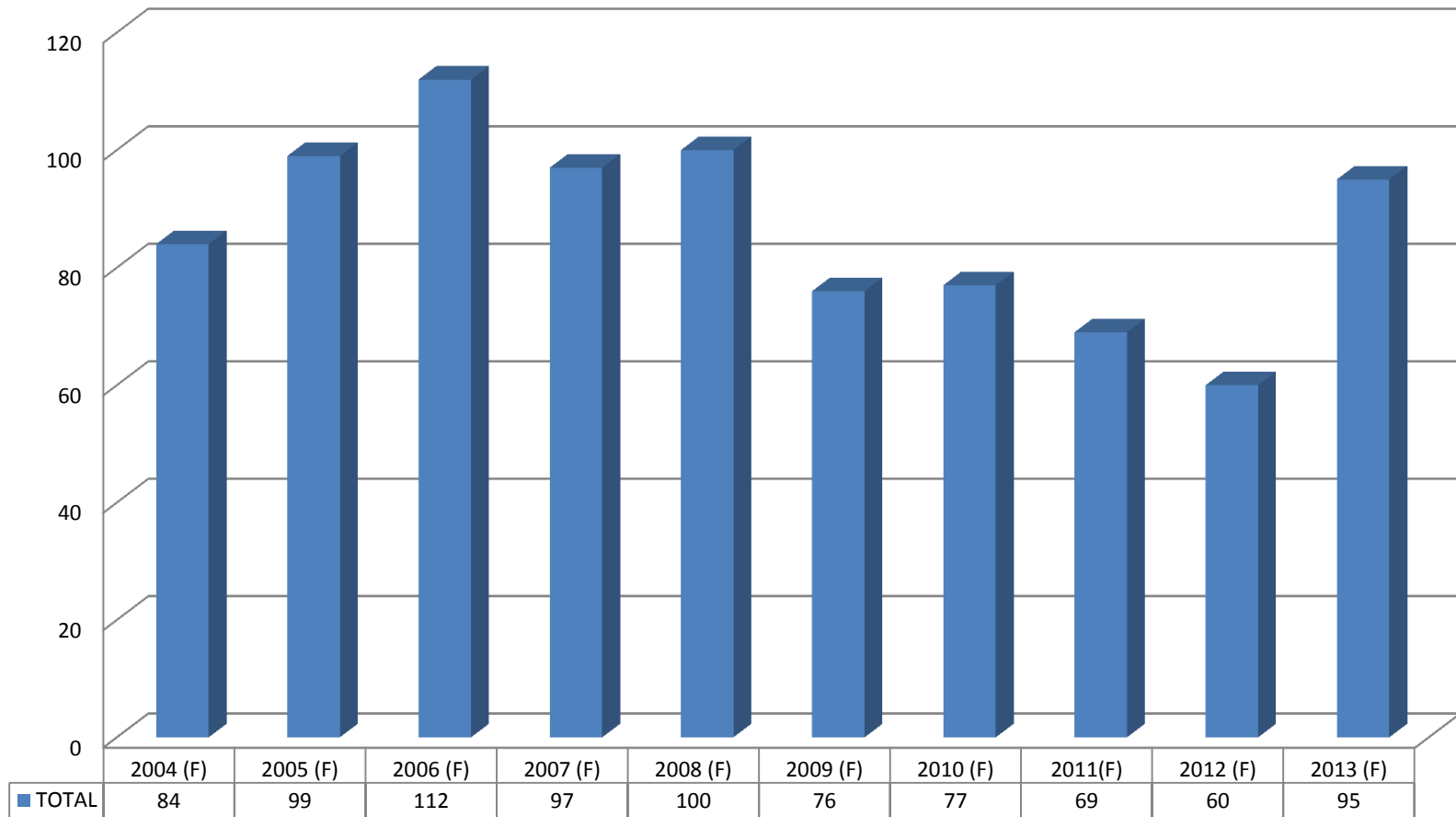


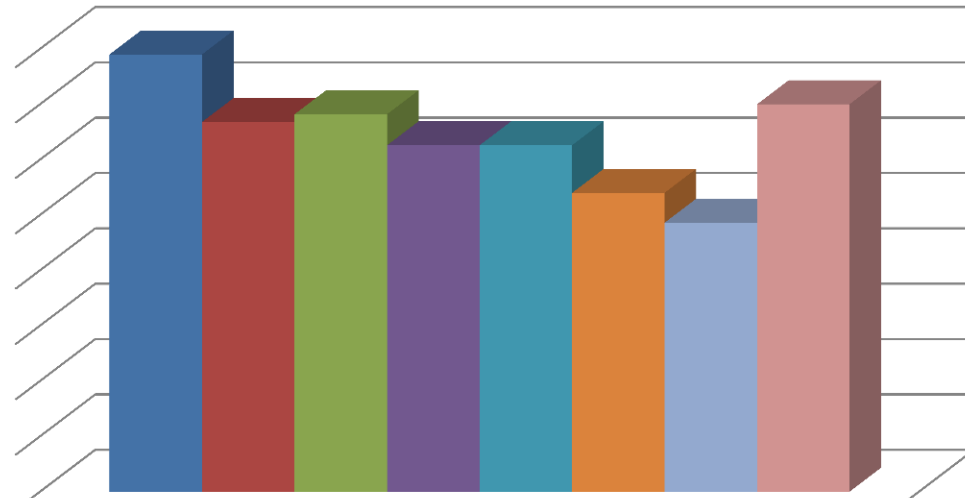
Total Occupational Fatalities - Arizona 2013



(F) - Final

SOURCE: CENSUS OF FATAL OCCUPATIONAL INJURIES, INDUSTRIAL COMMISSION OF ARIZONA

Fatality Rate per 100,000 2006-2013



Fatality Rate per 100,000 Employees	
■ 2006	4.0
■ 2007	3.3
■ 2008	3.4
■ 2009	3.1
■ 2010	3.1
■ 2011	2.7
■ 2012	2.4
■ 2013	3.5